

Artec Ray II

Multicharger User Manual



Introduction



This manual contains important safety directions as well as instructions for setting up the product and operating it. Refer to “Safety Directions” for further information.

Read carefully through the User Manual before you switch on the product.

Product identification

The type and serial number of your product are indicated on the type plate. Always refer to this information when you need to contact your agency contacting Artec 3D Support Team or Authorized Reseller.

Description of the System

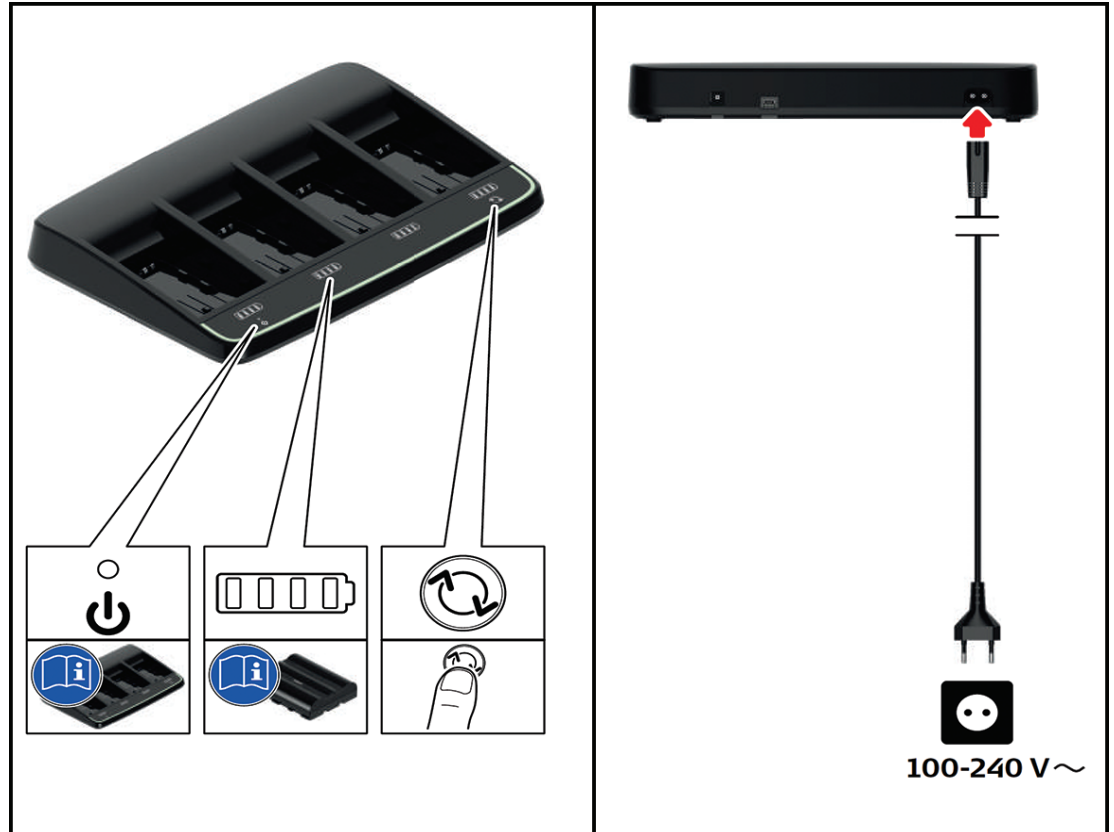
Main component

Multicharger



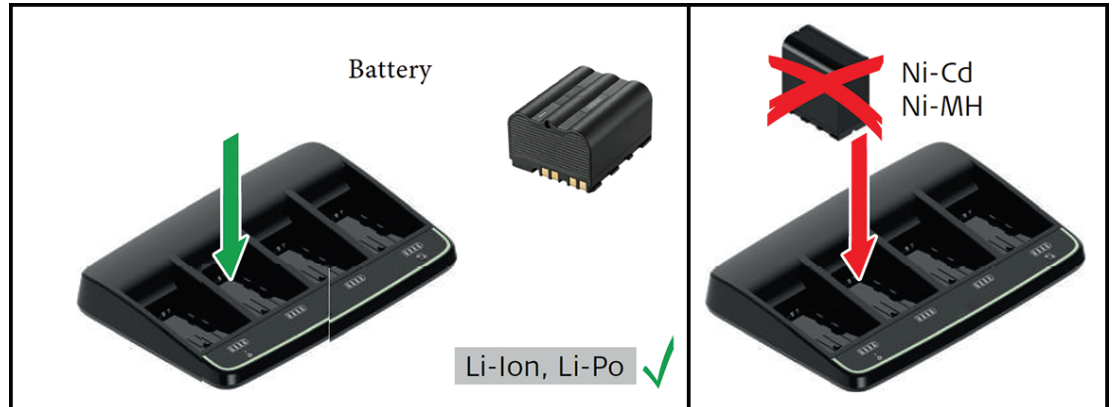
Description of the System

Charger components

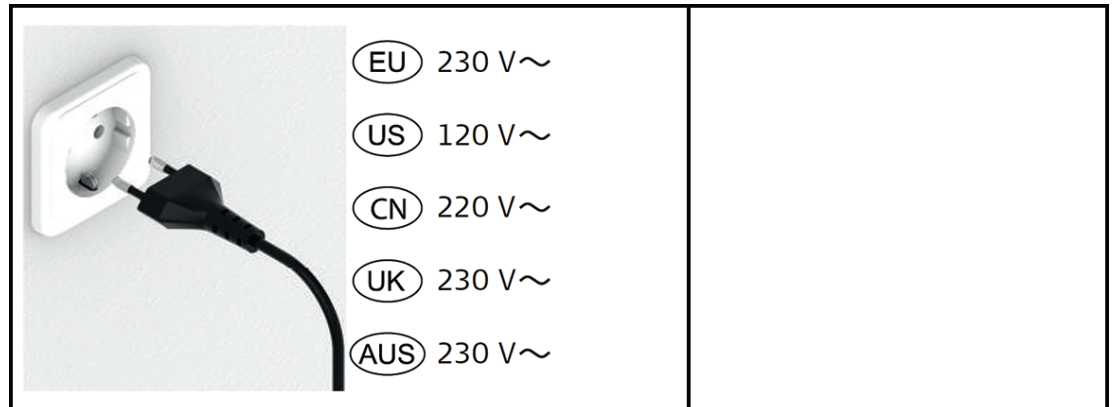


Description of the System

Supported batteries

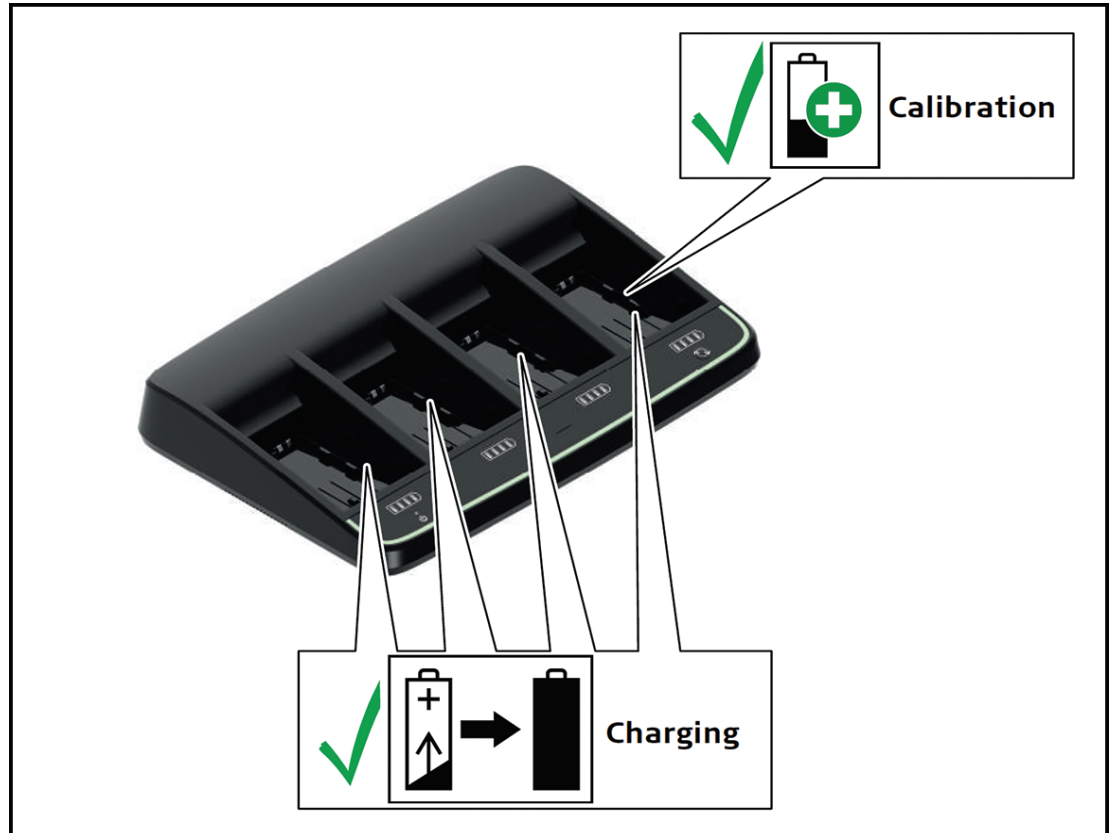


Power supply



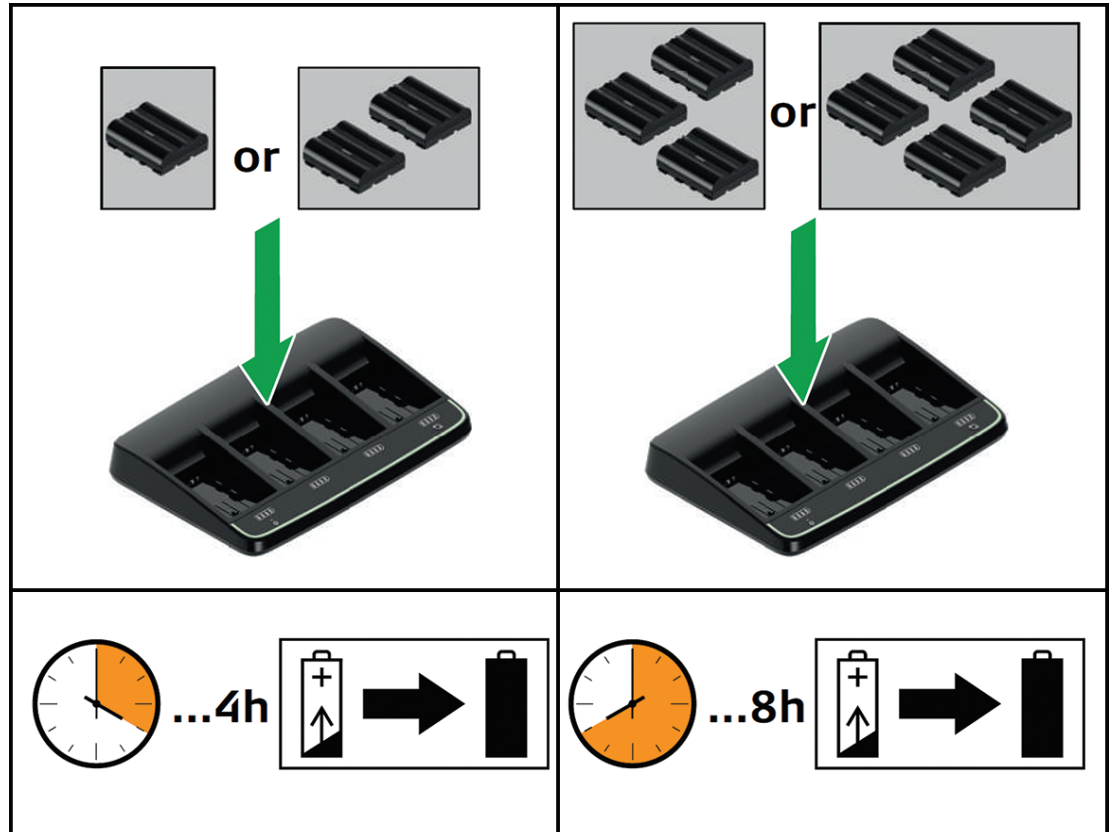
Description of the System

Charging function /
Calibration function



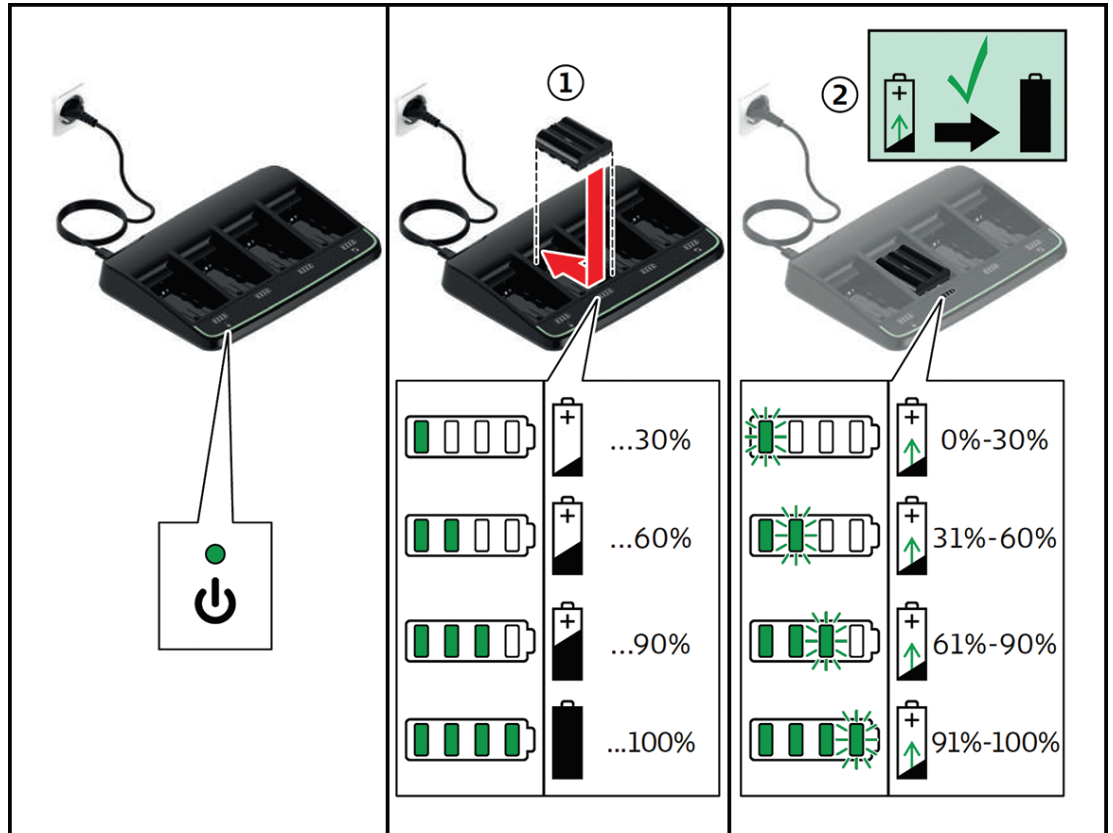
Description of the System

Charging times



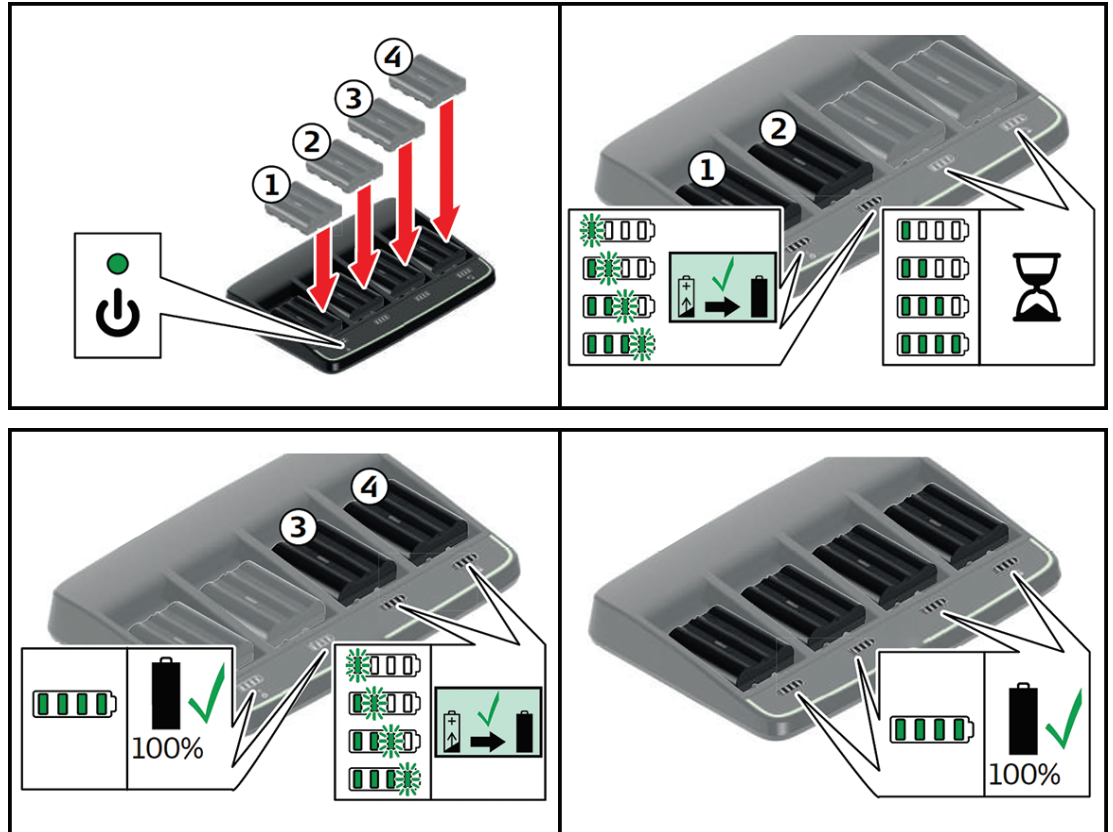
Charging Function

Inserting and charging the batteries



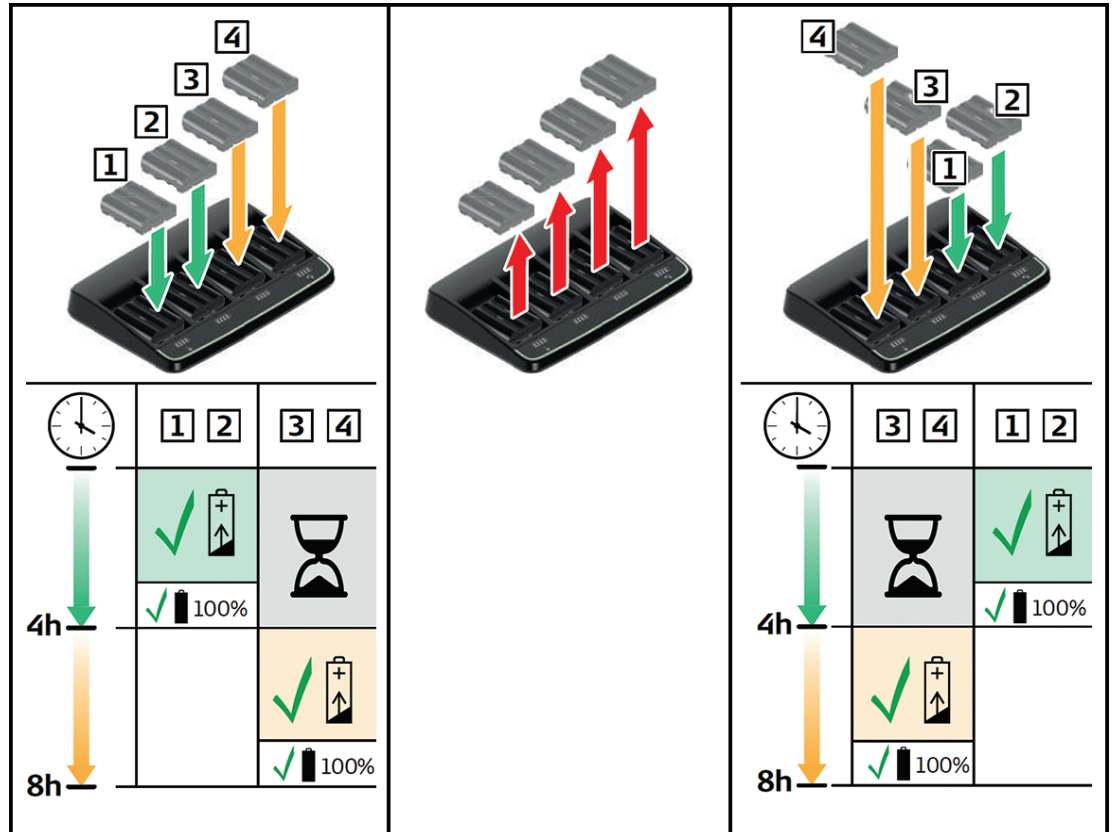
Charging Function

Charging priority



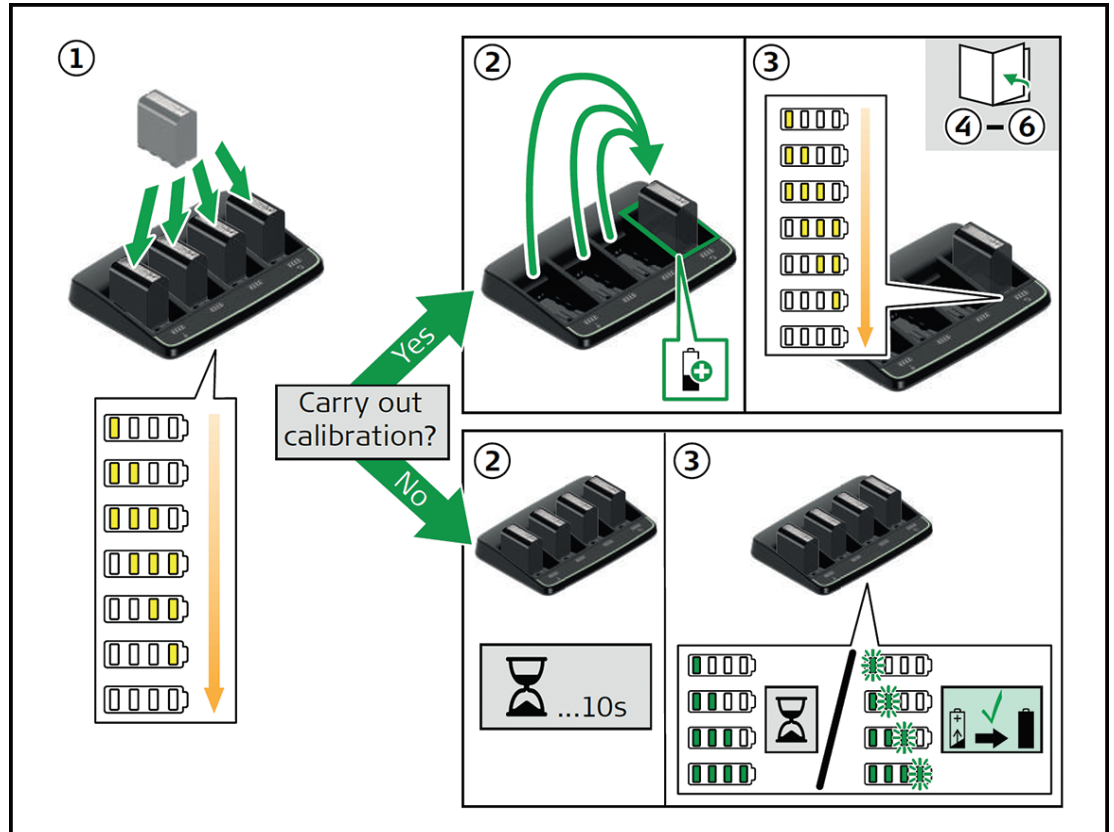
Charging Function

Change of charging priority

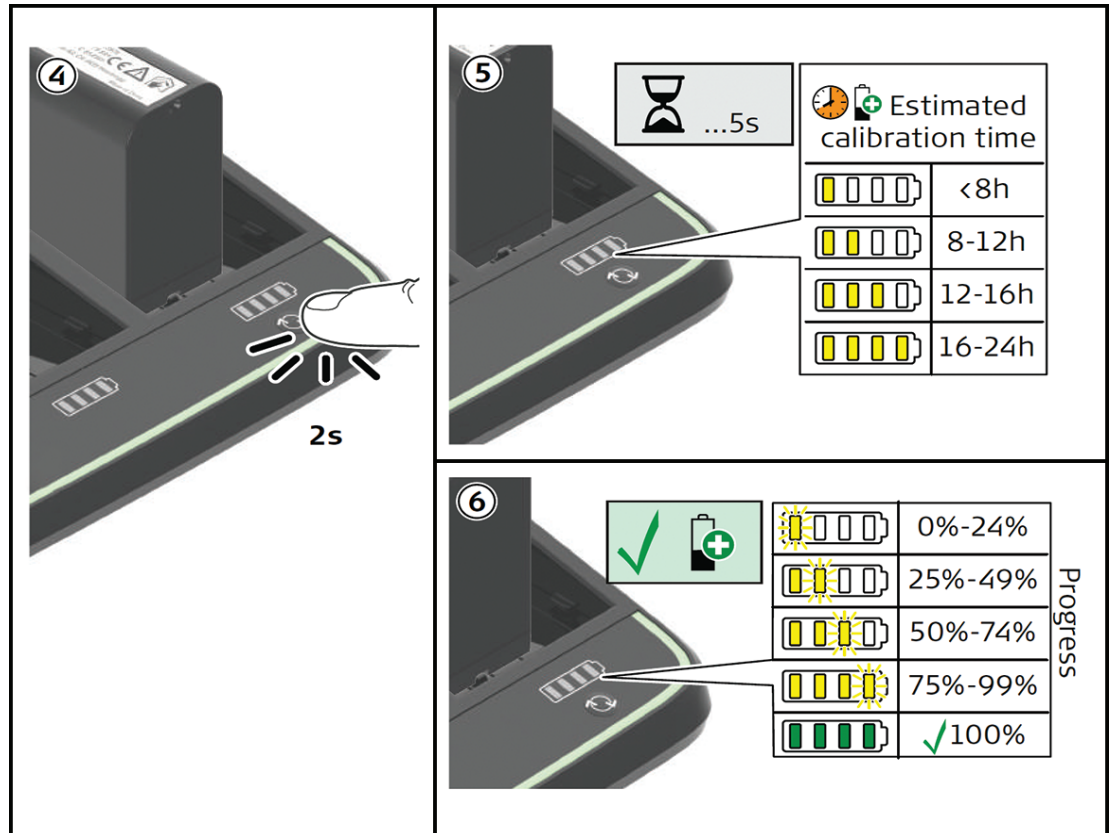


Calibration Function

Option 1: Charger recommends a calibration

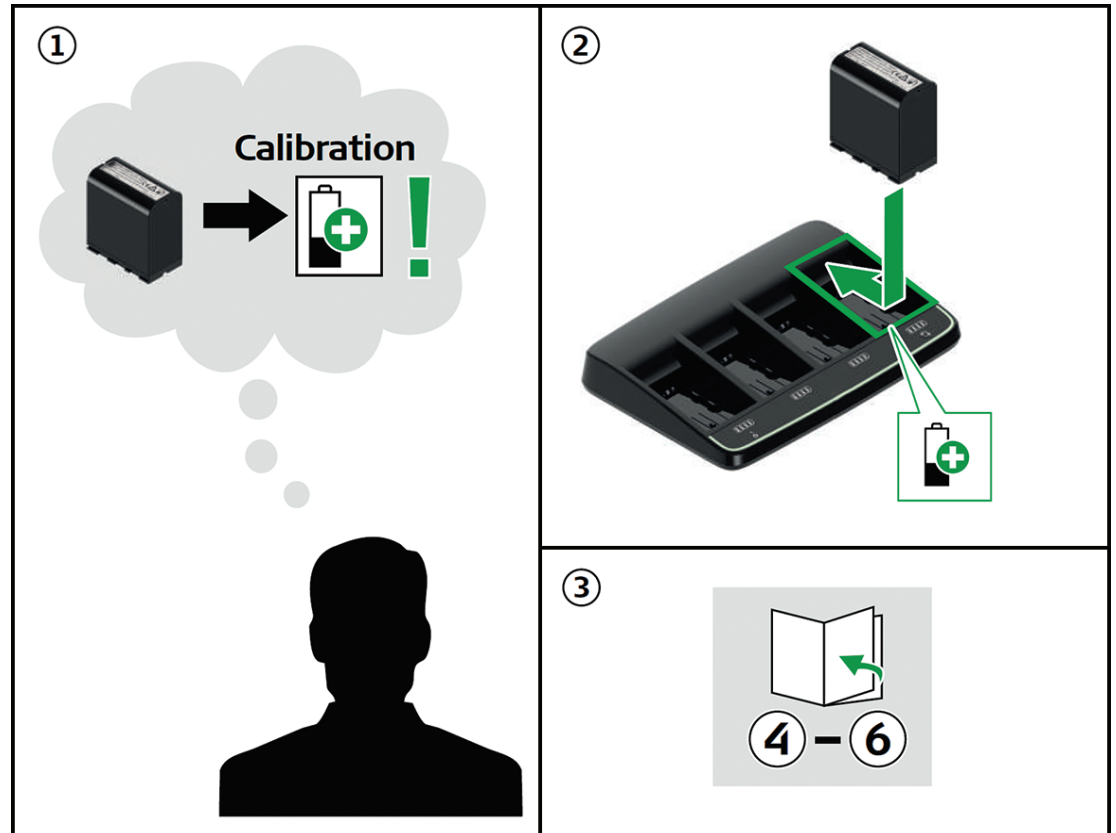


Calibration Function

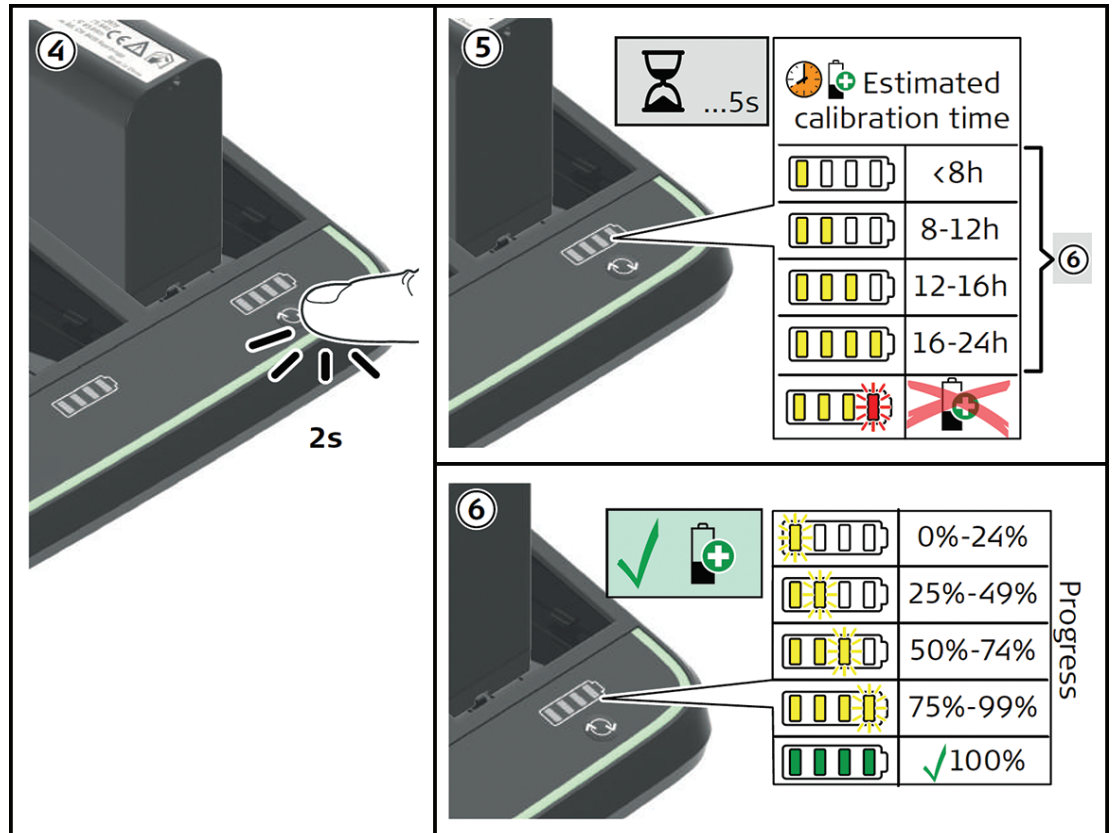


Calibration Function

Option 2: Request a calibration

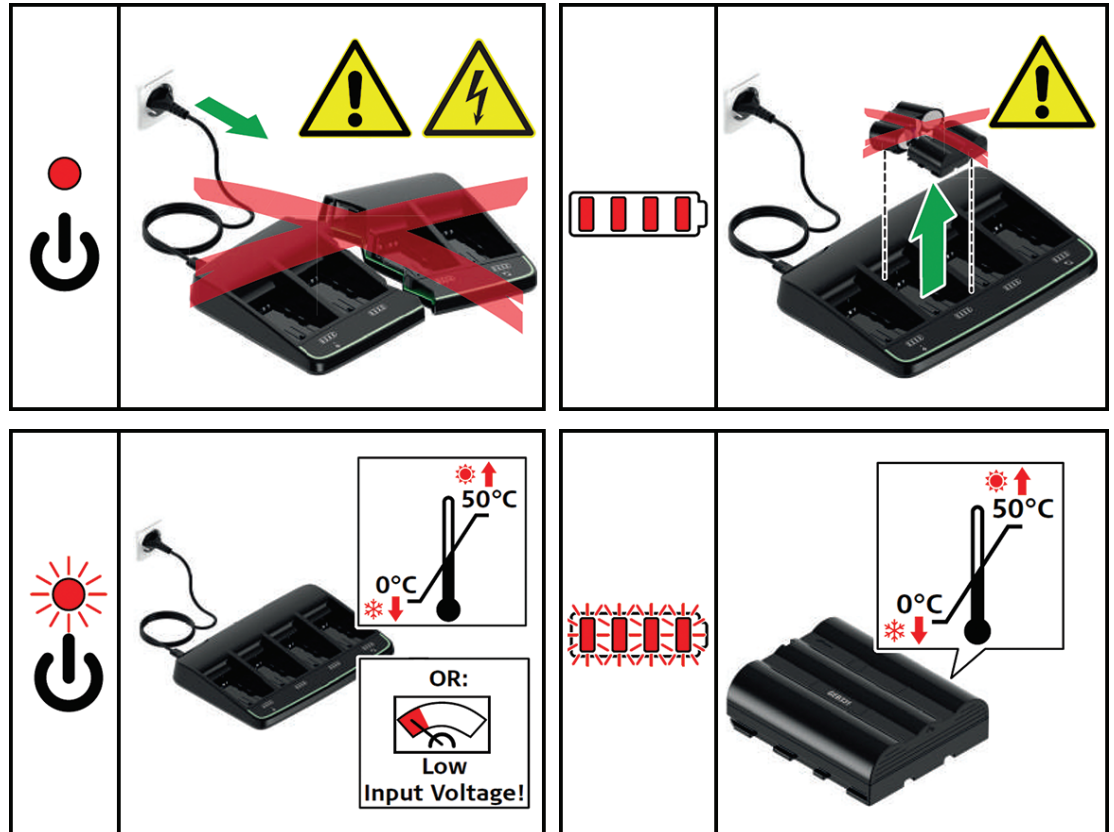


Calibration Function



Troubleshooting

Error indication



Safety Directions

Description

The following directions enable the person responsible for the product, and the person who actually uses the equipment, to anticipate and avoid operational hazards.

The person responsible for the product must ensure that all users understand these directions and adhere to them.

About warning messages

Warning messages are an essential part of the safety concept of the product. They appear wherever hazards or hazardous situations can occur.





Warning messages

- make the user alert about direct and indirect hazards concerning the use of the product.
- contain general rules of behaviour.

For the users' safety, all safety instructions and safety messages shall be strictly observed and followed! Therefore, the manual must always be available to all persons performing any tasks described herein.

DANGER, WARNING, CAUTION and **NOTICE** are standardized signal words for identifying levels of hazards and risks related to personal injury and property damage. For your safety it is important to read and fully understand the table below with the different signal words and their definitions! Supplementary safety information symbols may be placed within a warning message as well as supplementary text.

Safety Directions

Type	Description
 DANGER	Indicates an imminently hazardous situation which, if not avoided, will result in death or serious injury.
 WARNING	Indicates a potentially hazardous situation or an unintended use which, if not avoided, could result in death or serious injury.
 CAUTION	Indicates a potentially hazardous situation or an unintended use which, if not avoided, may result in minor or moderate injury.
NOTICE	Indicates a potentially hazardous situation or an unintended use which, if not avoided, may result in appreciable material, financial and environmental damage.
	Important paragraphs which must be adhered to in practice as they enable the product to be used in a technically correct and efficient manner.

Available documentation

Name	Description/Format
User Manual	All instructions required in order to operate the product to a basic level are contained in this User Manual. Provides an overview of the system together with technical data and safety directions.

Definition of Use

Intended use

- Charging and discharging of Li-Ion and Li-Po batteries.
-

First-time use / Charging batteries

- The battery must be charged prior to using it for the first time.
 - The permissible temperature range for charging is between 0°C to +40°C/+32°F to +104°F. For optimal charging, we recommend charging the batteries at a low ambient temperature of +10°C to +20°C/+50°F to +68°F if possible.
 - It is normal for the battery to become warm during charging. Using the chargers recommended by Artec 3D, it is not possible to charge the battery if the temperature is too high.
 - For Li-Ion batteries, a single refreshing cycle is sufficient. We recommend carrying out a refreshing cycle when the battery capacity indicated on the charger or on a Artec 3D product deviates significantly from the actual battery capacity available.
-

Reasonably foreseeable misuse

- Use of the product without instruction.
- Use outside of the intended use and limits.
- Disabling safety systems.
- Removal of hazard notices.
- Opening the product using tools, for example screwdriver, unless this is permitted for certain functions.
- Modification or conversion of the product.
- Use after misappropriation.
- Use of products with recognisable damages or defects.

Limits of Use

Environment

Suitable for use in dry environments only and not under adverse conditions.



Environmental specifications

For further information about operating/storing temperatures and protection against water, dust and sand refer to "Technical Data".

Responsibilities

Manufacturer of the product

Artec 3D (manufacturer) 11 Breedewues, L-1259 Senningerberg, Luxembourg, hereinafter referred to as Artec 3D, is responsible for supplying the product, including the User Manual and original accessories, in a safe condition.

Person responsible for the product

The person responsible for the product has the following duties:

- To understand the safety instructions on the product and the instructions in the user manual.
- To ensure that it is used in accordance with the instructions.
- To be familiar with local regulations relating to safety and accident prevention.
- To inform Artec 3D immediately if the product and the application becomes unsafe.
- To ensure that the national laws, regulations and conditions for the operation of e.g. radio transmitters or lasers are respected.

Hazards of Use

Warning



The product is not designed for use under wet and severe conditions. If unit becomes wet it may cause you to receive an electric shock.

Precautions:

Use the product only in dry environments, for example in buildings or vehicles. Protect the product against humidity. If the product becomes humid, it must not be used!



Warning



If you open the product, either of the following actions may cause you to receive an electric shock.

- Touching live components
- Using the product after incorrect attempts were made to carry out repairs

Precautions:

Do not open the product. Only Artec 3D authorised service workshops are entitled to repair these products.

Hazards of Use

Warning



Using the charger inside a driving vehicle can lead to dangerous situations which may result in damage or personal injury.

Precautions:

- If it can be avoided, do not use the charger inside a driving vehicle.
 - If it is necessary to use the charger inside a driving vehicle: Ensure that the charger is properly secured against sudden movements, such as acceleration, braking, or steering movements.
-

Warning



If the ventilation slots are covered while the product is being used, the product can overheat and cause injury or fire.

Precautions:

Make sure that the ventilation slots are not covered by any objects while the product is being used.

Hazards of Use

Warning



If charged or discharged, batteries not recommended by Artec 3D may be damaged. They may burn and explode.

Precautions:

Only charge and discharge batteries recommended by Artec 3D.

Warning



During the transport, shipping or disposal of batteries it is possible for inappropriate mechanical influences to constitute a fire hazard.

Precautions:

Before shipping the product or disposing it, discharge the battery by the product until they are flat.

When transporting or shipping batteries, the person in charge of the product must ensure that the applicable national and international rules and regulations are observed. Before transportation or shipping contact your local passenger or freight transport company.

Warning



High mechanical stress, high ambient temperatures or immersion into fluids can cause leakage, fire or explosions of the batteries.

Precautions:

Protect the batteries from mechanical influences and high ambient temperatures. Do not drop or immerse batteries into fluids.

Hazards of Use

Warning



If battery terminals are short circuited e.g. by coming in contact with jewellery, keys, metalized paper or other metals, the battery can overheat and cause injury or fire, for example by storing or transporting in pockets.

Precautions:

Make sure that the battery terminals do not come into contact with metallic objects.

Warning

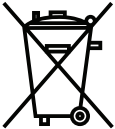


If the product is improperly disposed of, the following can happen:

- If polymer parts are burnt, poisonous gases are produced which may impair health.
- If batteries are damaged or are heated strongly, they can explode and cause poisoning, burning, corrosion or environmental contamination.
- By disposing of the product irresponsibly you may enable unauthorised persons to use it in contravention of the regulations, exposing themselves and third parties to the risk of severe injury and rendering the environment liable to contamination.

Precautions:

The product must not be disposed with household waste. Dispose of the product appropriately in accordance with the national regulations in force in your country. Always prevent access to the product by unauthorised personnel.



Electromagnetic Compatibility EMC

Description

The term Electromagnetic Compatibility is taken to mean the capability of the product to function smoothly in an environment where electromagnetic radiation and electrostatic discharges are present, and without causing electromagnetic disturbances to other equipment.

Warning



Electromagnetic radiation can cause disturbances in other equipment.

Although the product meets the strict regulations and standards which are in force in this respect, Artec 3D cannot completely exclude the possibility that other equipment may be disturbed.

Caution



There is a risk that disturbances may be caused in other equipment if the product is used with accessories from other manufacturers, for example field computers, personal computers or other electronic equipment, non-standard cables or external batteries.

Precautions:

Use only the equipment and accessories recommended by Artec 3D. When combined with the product, they meet the strict requirements stipulated by the guidelines and standards. When using computers or other electronic equipment, pay attention to the information about electromagnetic compatibility provided by the manufacturer.

Electromagnetic Compatibility EMC

Caution



Disturbances caused by electromagnetic radiation can result in erroneous measurements. Although the product meets the strict regulations and standards which are in force in this respect, Artec 3D cannot completely exclude the possibility that the product may be disturbed by intense electromagnetic radiation, for example, near radio transmitters, two-way radios or diesel generators.

Precautions:

Check the plausibility of results obtained under these conditions.

Caution



If the product is operated with connecting cables attached at only one of their two ends, for example external supply cables, interface cables, the permitted level of electromagnetic radiation may be exceeded and the correct functioning of other products may be impaired.

Precautions:

While the product is in use, connecting cables, for example product to external battery, product to computer, must be connected at both ends.

FCC Statement, Applicable in U.S.

Warning



This equipment has been tested and found to comply with the limits for a Class B digital device, pursuant to part 15 of the FCC rules. These limits are designed to provide reasonable protection against harmful interference in a residential installation. This equipment generates, uses and can radiate radio frequency energy and, if not installed and used in accordance with the instructions, may cause harmful interference to radio communications. However, there is no guarantee that interference will not occur in a particular installation.

If this equipment does cause harmful interference to radio or television reception, which can be determined by turning the equipment off and on, the user is encouraged to try to correct the interference by one or more of the following measures:

- Reorient or relocate the receiving antenna.
- Increase the separation between the equipment and the receiver.
- Connect the equipment into an outlet on a circuit different from that to which the receiver is connected.
- Consult the dealer or an experienced radio/TV technician for help.

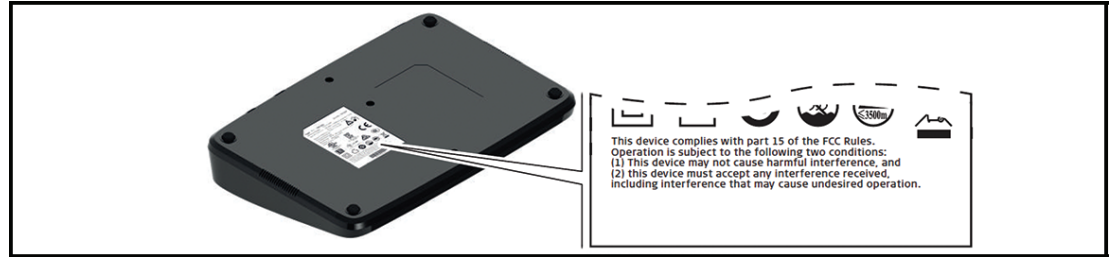
Warning



Changes or modifications not expressly approved by Artec 3D for compliance could void the user's authority to operate the equipment.

FCC Statement, Applicable in U.S.

Type plate labelling Multicharger



Transport

Shipping

When transporting the product by rail, air or sea, always use the complete original Artec 3D packaging, transport container and cardboard box, or its equivalent, to protect against shock and vibration.

Transport in a road vehicle

Never carry the product loose in a road vehicle, as it can be affected by shock and vibration. Always carry the product in its transport container, original packaging or equivalent and secure it.

Shipping, transport of batteries

When transporting or shipping batteries, the person in charge of the product must ensure that the applicable national and international rules and regulations are observed. Before transportation or shipping, contact your local passenger or freight transport company.

Storage

Product

Respect the temperature limits when storing the equipment, particularly in summer if the equipment is inside a vehicle. Refer to "Technical Data" for information about temperature limits.

Storing

Long-term battery storage is not recommended. If storage is necessary:

- Refer to "Temperature range" for information about storage temperature range.
- Remove batteries from the product and the charger before storing.
- After storage recharge batteries before using.
- Protect batteries from damp and wetness. Wet or damp batteries must be dried before storing or use.
- A storage temperature range of 0°C to +30°C/+32°F to 86°F in a dry environment is recommended to minimise self-discharging of the battery.
- At the recommended storage temperature range, batteries containing a 40% to 50% charge can be stored for up to one year. After this storage period the batteries must be recharged.
- Always try to use a 'first-in first-out' approach to minimise storage time.

Cleaning and Drying

Cables and plugs

- Use only a clean, soft, lint-free cloth for cleaning.

Keep plugs clean and dry. Blow away any dirt lodged in the plugs of the connecting cables.

Technical Data

Power supply

- Mains connection, ~
 - DC voltage connection, ===
-

Input voltage

- 100 - 240 V ~/50 - 60 Hz
 - 24VDC ===
-

Charging power

Maximum 56 Watt (0°C to +40°C)/Maximum 28-56 Watt (+40°C to +50°C)

Discharging power

Maximum 7.5 Watt

Power rating

Maximum 65 Watt

Operating environment

Only operate in dry environments, for example in buildings and vehicles.

Temperature range

- Storing the charger: -40°C to +70°C/-40°F to +158°F
 - Operating the charger: 0°C to +50°C/+32°F to +122°F
-

Protection against solid objects

Type	Protection
Multicharger	IP30 (IEC 60529) Protected against solid objects > 2.5 mm

Cell type

Li-Ion and Li-Po

Technical Data

Charging times

- 1-2 batteries: up to 4.0 h
 - 3-4 batteries: up to 8.0 h
-

Calibration times

Maximum 24 h

Calibration time depends primarily on the charging and discharging current, the nominal capacity of the battery and its state of charge. Calibration time is also affected by other batteries which are already inserted.

Weight

Charger: ca. 950 g

Dimensions

Width: 300 mm

Depth: 208.5 mm

Height: 49.4 mm

Conformity Declarations

Conformity to national regulations



Hereby, Artec 3D declares that the products Battery and Multicharger for Ray II are in compliance with the essential requirements and other relevant provisions of the applicable European Directives. For the full text of the EU declaration of conformity, please reach out to the to the Artec 3D Support Team.

